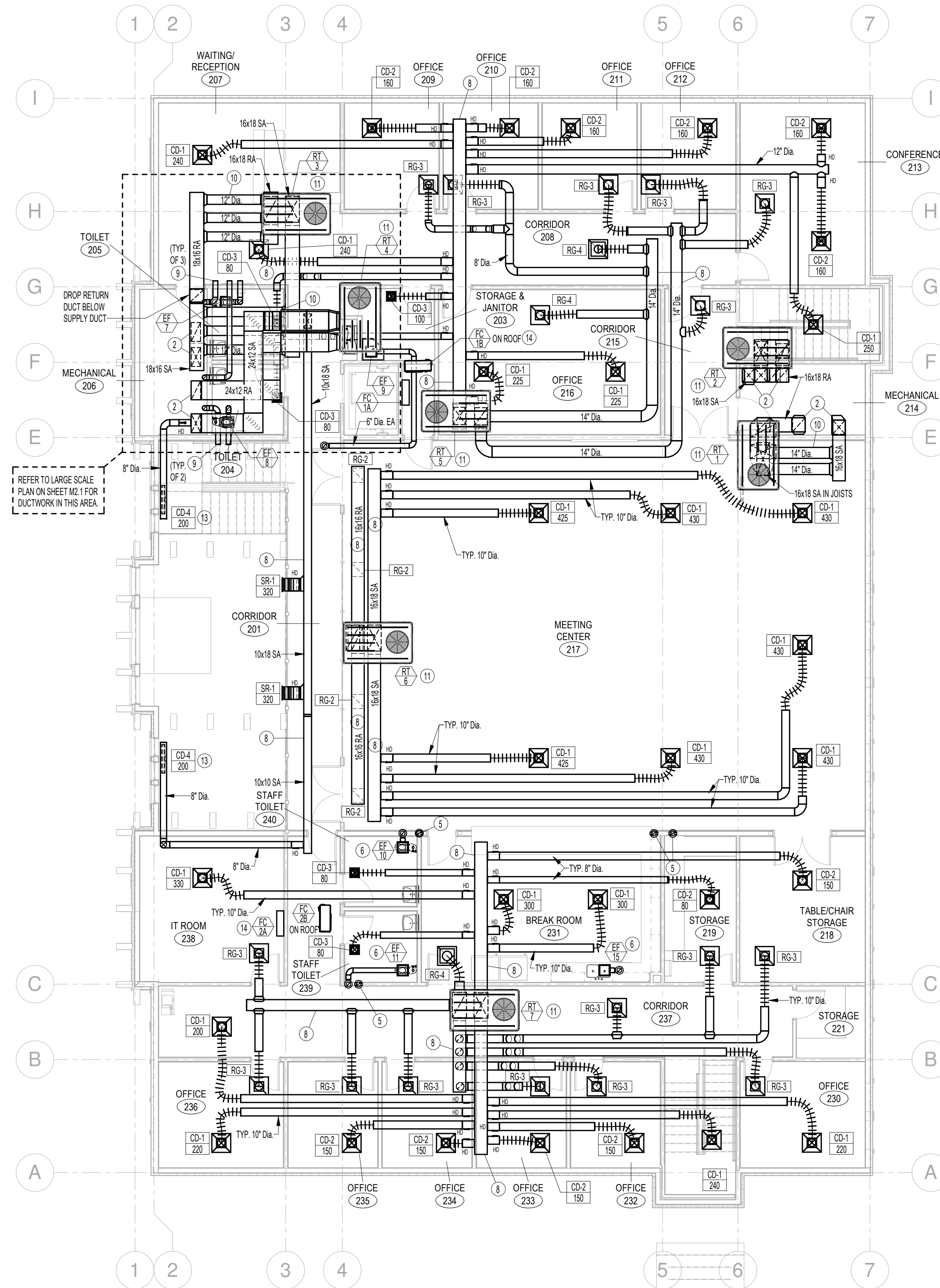
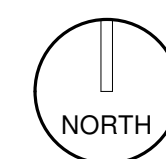


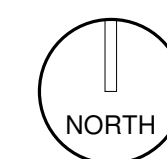
GROUND FLOOR MECHANICAL PLAN

SCALE: 1/8" = 1'-0"



SECOND FLOOR MECHANICAL PLAN

SCALE: 1/8" = 1'-0"

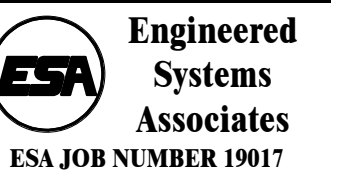


PLAN NOTES:

- 1 RISE DUCT UP IN MECHANICAL ROOM ABOVE. REFER TO SECOND FLOOR MECHANICAL PLAN FOR CONTINUATION. COORDINATE WITH FLOOR JOISTS.
- 2 DROP DUCTWORK DOWN IN MECHANICAL ROOM TO GROUND FLOOR. REFER TO GROUND FLOOR MECHANICAL PLAN FOR CONTINUATION. COORDINATE WITH FLOOR JOISTS.
- 3 RISE 6" DIAMETER EXHAUST DUCT UP IN MECHANICAL ROOM TO ABOVE CEILING OF SECOND FLOOR. EXTEND THRU WALL WITH WALL CAP.
- 4 INSTALL CEILING MOUNTED EXHAUST FAN AS SPECIFIED. RISE 10x3 DIAMETER EXHAUST DUCT UP IN WALL ABOVE. REFER TO SECOND FLOOR MECHANICAL PLAN FOR CONTINUATION. EXTEND THRU ROOF WITH ROOF CAP.
- 5 10x3 EXHAUST DUCT UP FROM BELOW. REFER TO GROUND FLOOR MECHANICAL PLAN. TRANSITION TO 8" DIA. AND EXTEND THRU ROOF WITH ROOF CURB AND ROOF CAP. REFER TO DETAIL B.M.1 FOR TYPICAL ROOF PENETRATION.
- 6 INSTALL CEILING MOUNTED EXHAUST FAN AS SPECIFIED. RISE 6" DIAMETER EXHAUST DUCT UP THRU ROOF WITH ROOF CURB AND ROOF CAP. REFER TO DETAIL B.M.1 FOR TYPICAL INSTALLATION.
- 7 RISE DUCT UP INTO JOIST SPACE. FIELD VERIFY EXACT LOCATION AND SPACING OF FLOOR JOISTS. COORDINATE DUCT WITH JOISTS.
- 8 RUN MAIN TRUNK DUCTS BETWEEN ROOF JOISTS AS SHOWN. RUN ROUND BRANCH DUCTS THRU JOIST WEBSING. COORDINATE EQUIPMENT AND DUCT LOCATIONS WITH ROOF JOISTS PROVIDED. ADJUST LOCATIONS AND ROUTING AS REQUIRED.
- 9 TYPICAL 6" DIA. EXHAUST DUCT FROM CEILING MOUNTED EXHAUST FAN. RISE UP INTO RAISED ROOF AREA AND EXTEND THRU WALL WITH WALL CAP. REFER TO DETAIL B.M.1 FOR TYPICAL INSTALLATION.
- 10 RUN ROUND DUCTS THRU ROOF JOISTS WEBSING AS SHOWN TO CONNECT (2) MAIN TRUNK DUCTS. COORDINATE WITH JOISTS WEBSING AND KEEP ALL DUCT BETWEEN EACH SYSTEM AS CLOSE TOGETHER AS POSSIBLE.
- 11 PROVIDE AND INSTALL ROOF TOP EQUIPMENT AS SPECIFIED. MOUNT ON ROOF CURB. PLACE UNIT AS REQUIRED TO DROP SUPPLY AND RETURN DUCTS DOWN BETWEEN ROOF JOISTS. (REFER TO UNITS ON ROOF PLAN - SHEET P1.2)
- 12 RISE 8" DIA. VENT UP FROM FIRE PLACE TO 10'0" ABOVE FLOOR. EXTEND THRU EXTERIOR WALL WITH WALL CAP AS PER MANUFACTURERS RECOMMENDATIONS.
- 13 INSTALL SLOT DIFFUSER AS SPECIFIED. FIELD BUILD DUCT TRANSITION AS REQUIRED TO CONNECT DIFFUSER TO 8" DIAMETER DUCT.
- 14 PROVIDE AND INSTALL MINI-SPLIT COOLING SYSTEM AS SPECIFIED. MOUNT INDOOR UNIT ON WALL AT 8'-0" ABOVE FLOOR. MOUNT OUTDOOR UNIT ON ROOF WITH PYRAMID TYPE SUPPORTS. (SEE DETAIL DR3.1). INDOOR UNIT TO BE SUPPLIED WITH CONDENSATE PUMP. RISE REFRIGERANT LINES AND 3/4" CONDENSATE DRAIN LINE UP THRU ROOF WITH 4" DIA. GOOSENECK. REFER TO DETAILS C.M.1 AND D.M.1 FOR TYPICAL CONNECTIONS AND ROOF PENETRATION.



Ownership & Use of Documents
 Drawings and specifications, as instruments of professional service are and shall remain the property of the architect. These documents are not to be used, in whole or in part for any project or purposes whatsoever, without the prior specific written authorization of GPC Architects PLLC.



no.	description	date

project: 1804
 date: 06/06/19

MECHANICAL FLOOR PLANS

sheet:

M1.1